

UMG

CONSTRUCTION
EQUIPMENT

ROAD CONSTRUCTION EQUIPMENT & SPECIALTY MACHINES

WHEELED EXCAVATORS



UMG

WHEELED EXCAVATORS

www.umg-sdm.com

HOUSING & COMMUNITY SERVICES

AGRIBUSINESS

MINING & PROCESSING

ROAD CONSTRUCTION

COMMERCIAL,
CIVIL & INDUSTRIAL
CONSTRUCTION

OIL & GAS AND
ELECTRIC POWER INDUSTRY

LUMBER INDUSTRY

TRANSPORT INFRASTRUCTURE

IRON & STEEL INDUSTRY



MODELS

E140W

E140WG

E170W

E200W

WX200

E220W

E195A / E195ARH

E210TS





CAB

UMG excavators have modern cab designed by UMG engineers. Smart design, plenty of space and exceptional floor-to-ceiling windows together with ergonomic interior and easy steering ensure operator's comfort during the whole shift.

Operator's seat with numerous adjustments to suit all operators. The standard configuration features the climate control system which includes a heater, air conditioner and cab air filter. It creates cabin pressurization that encapsulates the operator from environmental exposure, while the air filters ensure clean air in the cab.



POWERTRAIN

UMG CE excavators feature modern powerful and efficient engines that ensure long-term and reliable operations.

The turbo engine from Deutz (Germany), water-cooled, high-pressure fuel injection with Deutz common rail system, and charge air cooler, complies with Tier 2 standard.

Turbocharged engines from YaMZ or CUMMINS KAMA (Russia), water-cooled, with high-pressure fuel injection system Common Rail, electronic control, supercharged air intercooler, comply with Tier 3 emission standards.





HYDRAULICS

The LUDV flow sharing system ensures that individual functions are assigned different speeds and directions of movement with minimum loss of power. The hydraulic system ensures flow sharing regardless of the loads. Flow sharing is proportional to impact of the operator on the controls that ensures high excavator productivity through unrestricted number of overlappings in one work cycle.



UNDERCARRIAGE

All excavators have robust and rigid wheel undercarriage. Our engineers when designing the steel components have used the cutting-edge engineering solutions and software. The frame is made of high-strength structural alloy steels that make it exceptionally resistant to bending and torsion which occur during intensive operations.

The twin wheels (front & rear) improve excavator's stability when travelling, reduce pressure on the contact area and promote offroad capabilities. You can also install the steel spacer rings to prevent rocks & debris from entering in between tires.

The axles and transmission from the renowned suppliers (Carraro, Italy and ZF, Germany) ensure speed-shifting or

powershifting, and have hydraulic oil-immersed multi-disk brakes. The wet disk brake in the transmission, spring applied and hydraulic released.

The rods of the outrigger hydraulic cylinders have protective boots.



E140W



SPECIFICATIONS

E140W

Operating weight, t (stick 2,000 / 2,310 / 2,800 mm)	13,2	13,4	13,6
---	------	------	------

ENGINE

Model	Deutz BF 4M 2012
Power, kW (hp)	67 (90) at 2,000 rpm
Fuel consumption, g/kW•h	229

UNDERCARRIAGE

Ground clearance, mm	350
Min turning radius, mm	7300
Max travel speed, kmph	25

WORKING RANGES & PARAMETERS

Cycle, sec	12					
Stick, mm	2000		2310*		2800	
Bucket capacity, m³	0,8***	0,8**	0,8	0,65	0,55	0,65
Max digging depth, mm	5135	4945	5445	5315	5935	5805
Max digging reach, m	8655	8465	8960	8830	9440	9310
Max dumping height, mm	6425	6615	6680	6810	7050	7215

DIMENSIONS

Overall length, mm	8042	8055	8030
Overall width, mm	2500	2500	2500
Overall height of boom, mm	2915	3005	3170
Overall height of cab, mm	3062	3062	3062

- standard stick
- standard bucket
- bucket with wider digging reach

Among the Best-in-Class

E140WG



SPECIFICATIONS

E140WG*

operating weight, t (stick 2,310 mm)	14,5
---	------

ENGINE

Model	Deutz TCD 2012 LO4 2V
Power, kW (hp)	88 (118) at 2,100 rpm

UNDERCARRIAGE

Ground clearance, mm	350
Min turning radius, mm	7300
Max travel speed, kmph	25

WORKING RANGES & PARAMETERS

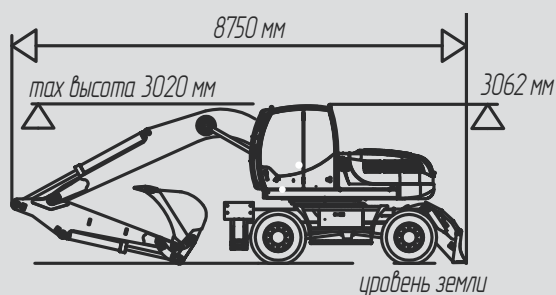
Cycle, sec	12
Stick, mm	2310
Bucket capacity, m³	0,32...0,55
Max digging depth, mm	5650
Max digging reach, m	9340
Max dumping height, mm	7405

DIMENSIONS

Overall length, mm	8540
Overall width, mm	2500
Overall height of boom, mm	3900
Overall height of cab, mm	3062

* excavator with variable geometry boom

E170W



SPECIFICATIONS

E170W

Operating weight, t (stick 2,530 / 3,000 / 3,600 mm)	16,2	16,4	16,6
---	------	------	------

ENGINE

Model	Deutz BF 4M 2012 C
Power, kW (hp)	90 (122) at 2,200 rpm
Fuel consumption, g/kW·h	223

UNDERCARRIAGE

Ground clearance, mm	350
Min turning radius, mm	7300
Max travel speed, kmph	25

WORKING RANGES & PARAMETERS

Cycle, sec	13,5		
Stick, mm	2530*	3000	3600
Bucket capacity, m³	1,0	0,8	0,65 / 0,8**
Max digging depth, mm	5865	5945	6417
Max digging reach, m	9120	9200	10227
Max dumping height, mm	6400	6200	6486
			6838

DIMENSIONS

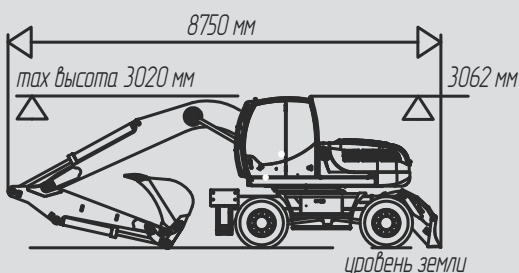
Overall length, mm	8750	8800	7160
Overall width, mm	2500	2500	2500
Overall height of boom, mm	3020	3160	2710
Overall height of cab, mm	3062	3062	3062

* standard stick

** for materials with the density of up to 1,400 kg/m³

Among the Best-in-Class

E200W



SPECIFICATIONS

E200W

Operating weight, t (stick 2,530 / 3,000 / 3,600 mm)	19,3	19,5	19,7
---	------	------	------

ENGINE

Model	Deutz BF 4M 2012 C CUMMINS KAMA QSB 4.5
Power, kW (hp)	90 (122) at 2,200 rpm O (130) / 120 (163)** at 2,200 rpm
Fuel consumption, g/kW·h	223 212

UNDERCARRIAGE

Ground clearance, mm	350
Min turning radius, mm	7300
Max travel speed, kmph	25

WORKING RANGES & PARAMETERS

Cycle, sec	13,5		
Stick, mm	2530*	3000	3600
Bucket capacity, m³	1,0	1,1 / 1,25	1,0
Max digging depth, mm	5865	5945	6340
Max digging reach, m	9120	9200	9570
Max dumping height, mm	6280	6200	6565
			6838

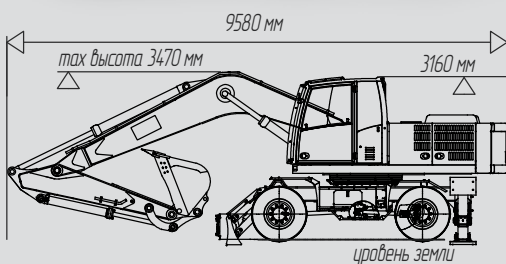
DIMENSIONS

Overall length, mm	8750	8800	7160
Overall width, mm	2500	2500	2500
Overall height of boom, mm	3020	3160	2710
Overall height of cab, mm	3062	3062	3062

* standard stick

Among the Best-in-Class

WX200



SPECIFICATIONS

WX200

Operating weight, t (stick 2,000; 2,400; 2,920; 3,500 mm)	21,7	22,3
--	------	------

ENGINE

Model	YaMZ 536
Power, kW (hp)	147 (200) at 2,000 rpm
Fuel consumption, g/kW·h	210

UNDERCARRIAGE

Ground clearance, mm	331
Min turning radius, mm	8500
Max travel speed, kmph	35

WORKING RANGES & PARAMETERS

Cycle, sec	12			
Stick, mm	2000	2400	2920*	3500
Bucket capacity, m³	0,65	0,9	1,0	1,25
Max digging depth, mm	5600	6048	6568	7100
Max digging reach, m	9370	9780	10194	10700
Max dumping height, mm	6700	7068	7178	7450

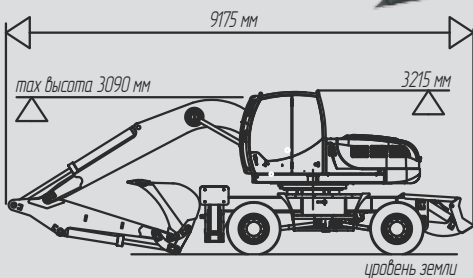
DIMENSIONS

Overall length, mm	9540	9530	9580	9360
Overall width, mm	2517	2517	2517	2517
Overall height of boom, mm	3170	3130	3470	3980
Overall height of cab, mm	3160	3160	3160	3160

* standard stick

Among the Best-in-Class

E220W



SPECIFICATIONS

E220W

Operating weight, t (stick 2,530; 3,000; 3,600 mm)	21,5	21,7	21,9
---	------	------	------

ENGINE

Model	CUMMINS KAMA QSB 4.5
Power, kW (hp)	120 (163) at 2200 rpm
Fuel consumption, g/kW·h	229

UNDERCARRIAGE

Ground clearance, mm	350
Min turning radius, mm	7300
Max travel speed, kmph	25

WORKING RANGES & PARAMETERS

Cycle, sec	13,5		
Stick, mm	2530*	3000	3600
Bucket capacity, m³	1,1 / 1,25	1,1	1,0
Max digging depth, mm	5735	6200	6715
Max digging reach, m	9200	9655	10130
Max dumping height, mm	6415	6680	7135

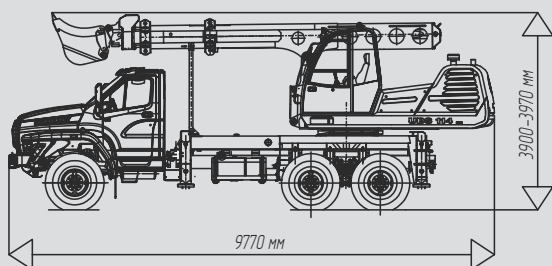
DIMENSIONS

Overall length, mm	9175	9225	7260
Overall width, mm	2500	2500	2500
Overall height of boom, mm	3090	3210	2865
Overall height of cab, mm	3215	3215	3215

* standard stick

Among the Best-in-Class

E210TS TELESCOPIC EXCAVATOR ON AUTOMOTIVE CHASSIS



SPECIFICATIONS

E210TS

Operating weight, t	21,65
Standard chassis	URAL 4320-6951-74
Max travel speed, kmph, km/h	90

ENGINE

Excavator engine	Iveco N45ENTX20.00
Truck engine power, kW (hp.)	228 (310)
Excavator engine power, kW (hp)	104 (141)
Fuel consumption in excavation regime, L/h	14

WORKING RANGES & PARAMETERS

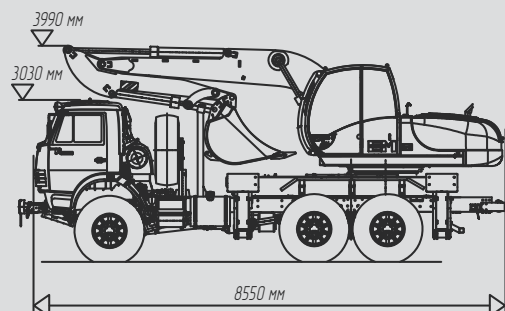
Cycle, sec	20
Bucket capacity (SAE), m ³	0,63
Max digging depth, mm	6350
Max digging reach at ground level, mm	10000
Max digging reach, m	10500
Max digging height, mm	7980
Max dumping height, mm	6400

DIMENSIONS

Overall length, mm	9770
Overall width, mm	2500
Overall height of bucket (front), mm	3970
Overall height of boom (rear), mm	3820

* standard stick

E195A / E195ARH TRUCK-MOUNTED EXCAVATOR



SPECIFICATIONS

E195A

E195ARH*

Operating weight, t	19,6
Standard chassis	KAMAZ-43118-50
Max travel speed, kmph	90

ENGINE

Excavator engine	Deutz BF 4M 2012
Truck engine power, kW (hp.)	221 (300,5)
Excavator engine power, kW (hp)	67 (90) at 2,000 rpm
Fuel consumption in excavation regime, L/h	12

WORKING RANGES & PARAMETERS

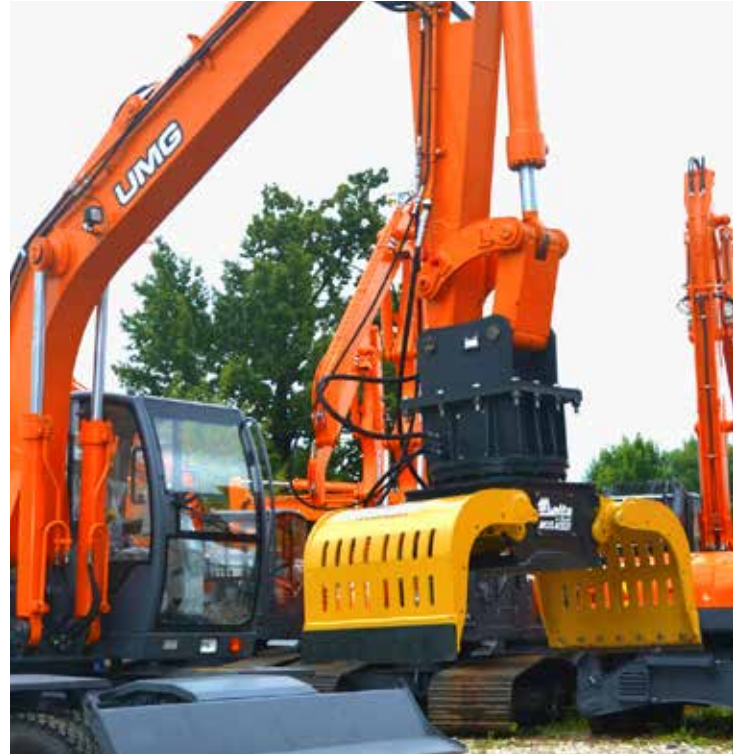
Cycle, sec	12	
Bucket capacity (SAE), m³	0,8	0,65
Max digging depth, mm	5000	5635
Max digging reach at ground level, mm	8080	8785
Max digging reach, m	8500	9110
Max digging height, mm	8660	9250
Max dumping height, mm	6100	5440

DIMENSIONS

Overall length, mm	8550
Overall width, mm	2550
Overall height, mm	3990

* excavator with tilt-rotate system

ATTACHMENTS



Vibratory Hammer



Vibratory Rammer



Hydraulic Hammer



Loading Grab



Crusher Bucket



Digging Grab



Rotary Grinder

ATTACHMENTS

The high flow hydraulic quick coupler on all wheeled excavators ensures autonomous mounting of various attachments, enhances the machines' utility and productivity. We offer a wide choice of buckets for different operating requirements: trenching buckets, grading buckets, loader buckets, drainage buckets and many more. Practically all models can be equipped with additional attachments that will tailor UMG machines to the specific requirements of a customer's working needs: hydraulic hammers, rippers, clamshells, shears, hydraulic drills, mulcher and harvester heads etc.

THE STANDARD CONFIGURATION INCLUDES THE MINIMUM KIT OF HYDRAULIC COMPONENTS

AND CONTROLS TO ENSURE CONNECTION OF ATTACHMENTS AND HEADS. FOR EASY AND QUICK INTERCHANGING, THE EXCAVATORS CAN BE EQUIPPED WITH MECHANICAL QUICK COUPLERS. HYDRAULIC UNITS ARE ALSO AVAILABLE AS AN OPTION.

WORK TOOLS

All work tools for UMG excavators have been designed and manufactured in-house. They are rigid and robust due to alloy steels. All elements have been designed through 3D and tested through FEM analysis.

The reinforced buckets with wear-resistant teeth and side cutters ensure digging of frozen ground or hard rock.

SERVICE & MAINTENANCE



EASY MAINTENANCE

All service checks are accessible at ground level, the hood systems provide full access to make daily checks easy and quick, ensuring less idle time of the machine and enhanced productivity.





MADE IN RUSSIA

15-1 Rochdelskaya str., Moscow, Russia
8 (800) 250-49-55 (toll-free in Russia)
www.umd-sdm.com



Materials and specifications are subject to change without notice.
Standard & optional equipment configurations are subject to change.
Product images are for illustrative purposes only and may differ from the actual product.